

NK cells: receptors and functions

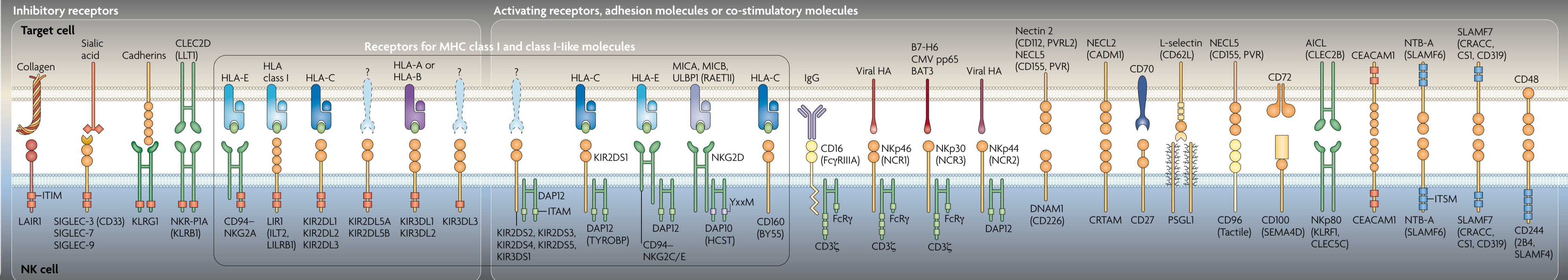
Eric Vivier and Sophie Ugolini

Natural killer (NK) cells were identified in 1975 as lymphocytes of the innate immune system that can kill tumour cells. Since then, NK cells have been shown to kill an array of 'stressed' cells and secrete cytokines that participate in shaping adaptive immune responses. A key feature of NK cells resides in their capacity to distinguish stressed cells (such as tumour cells, infected cells and damaged cells) from normal cells. Although NK cells are generally considered to be components of early innate immune defence,

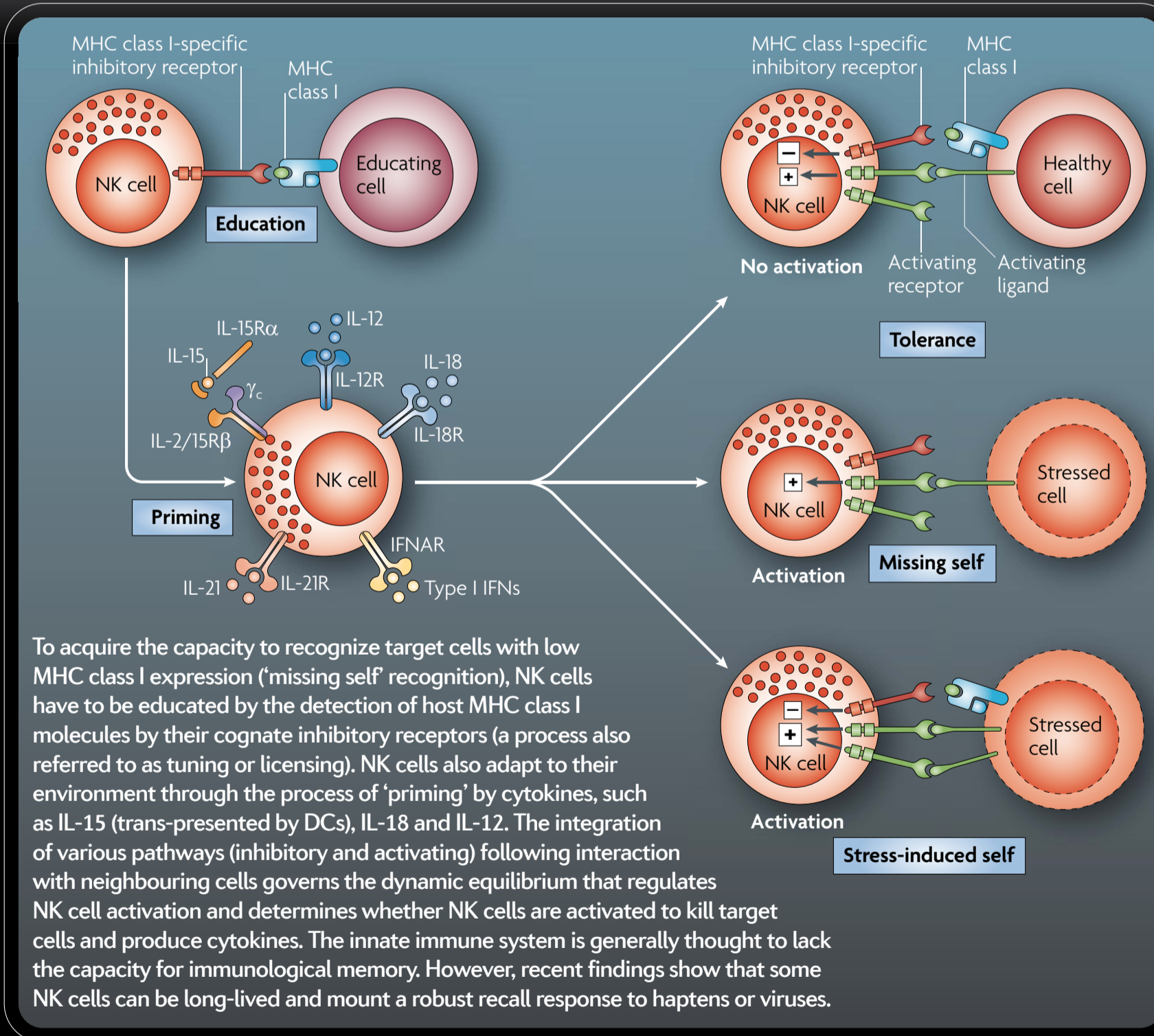
many processes that were originally restricted to adaptive immunity, such as priming, education and memory, are now known to occur in NK cells. Indeed, NK cells undergo sophisticated processes of adaptation that allow them to be tuned to their environment. There is also a growing interest in manipulating NK cells in innovative therapeutic settings. For example, the understanding of NK cell inhibition by MHC class I-specific receptors has prompted the design of innovative anticancer therapies.

The NK cell detection system includes numerous receptors, the engagement of which dictates the quality and intensity of the NK cell response. NK cells use inhibitory receptors to gauge the absence of constitutively expressed self molecules on susceptible target cells. As a consequence, NK cells can recognize 'missing self' on haematopoietic cells. By interacting with MHC class I molecules that are constitutively expressed by most healthy cells under steady-state conditions but that may be lost under conditions of stress, MHC class I-specific inhibitory receptors provide a way for NK cells to remain tolerant to healthy self cells while being toxic towards stressed cells. By contrast, NK cell activating receptors detect self molecules that are expressed under conditions of cell stress. Only human NK cell receptors are shown and the list is not exhaustive. There are several differences in NK cell receptors between mice and humans. In mice, inhibitory MHC class I-specific receptors are lectin-like dimers of the Ly49 family. Although several activating NK cell receptors are present in humans and mice (such as CD16, NKp46, DNAM1 and NKG2D), commonly used mouse strains lack orthologues of NKp30 and NKp44.

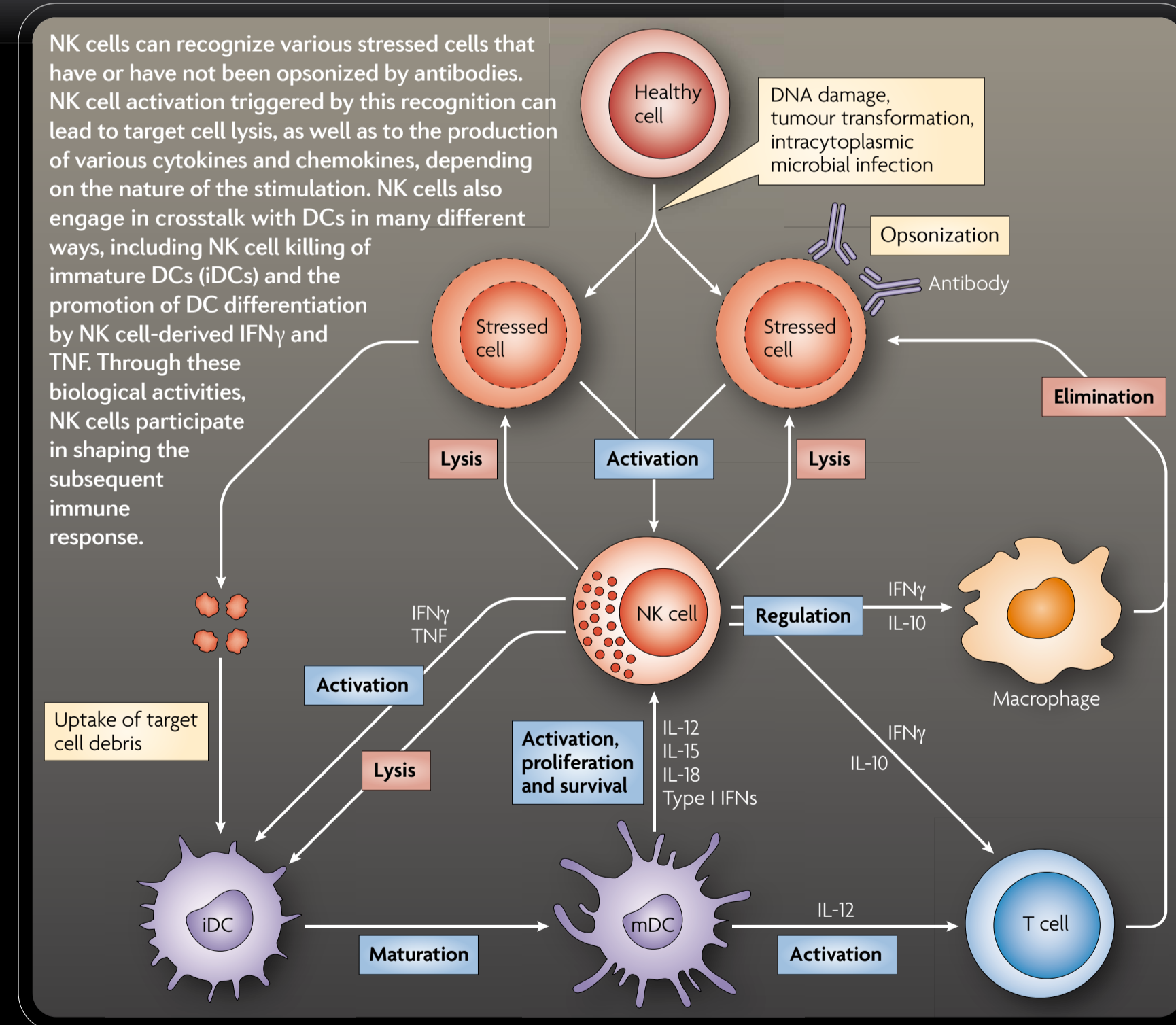
Key receptors on human NK cells



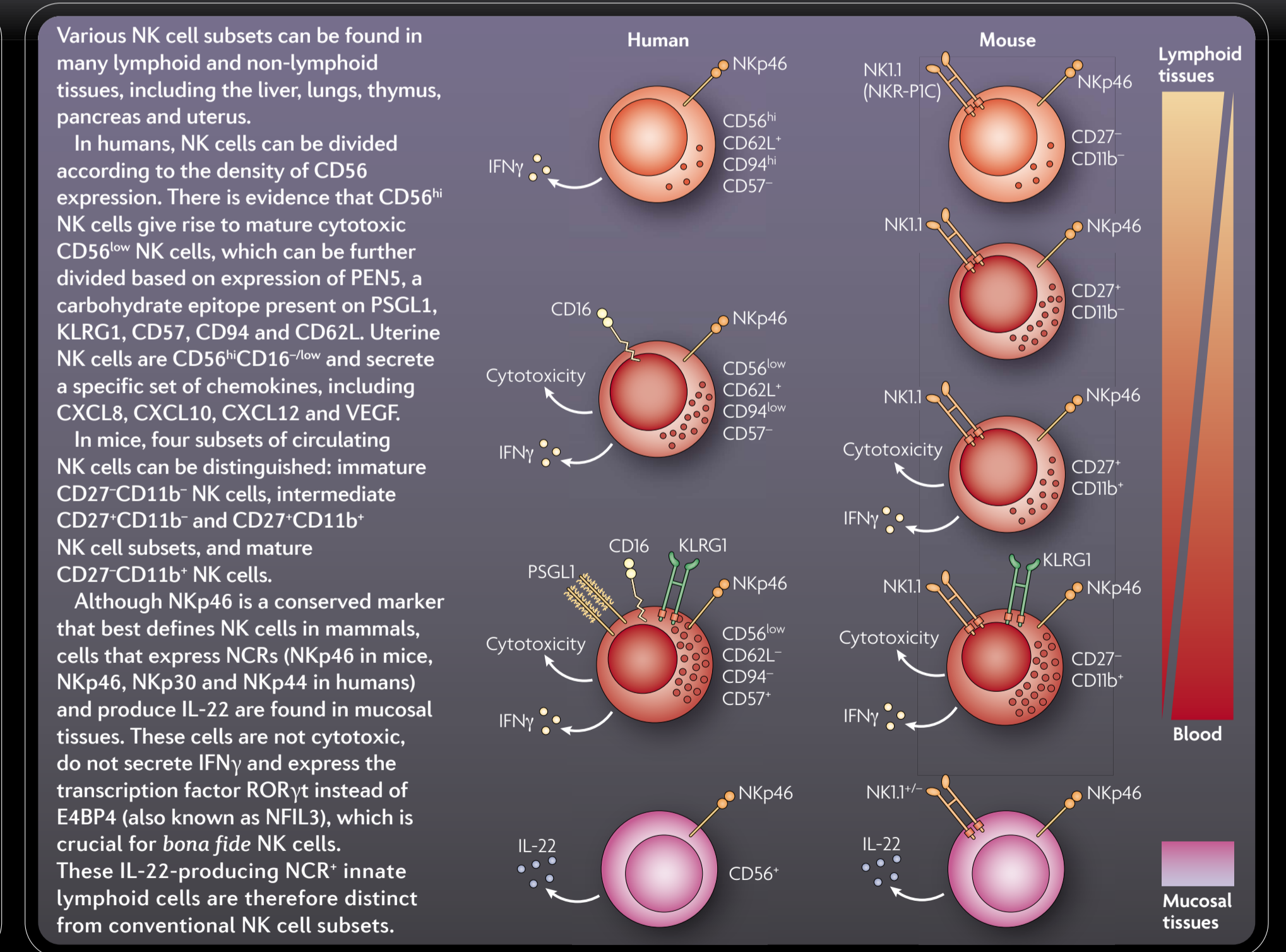
Acquisition of NK cell function



Biological function of NK cells and cellular crosstalk



NK cell subsets and NK-like innate lymphoid cells



How to Obtain High Yields of NK cells with STEMCELL Technologies

The isolation and culture of highly purified, functional NK cells are critical for successful NK cell research. STEMCELL Technologies offers products for fast and easy cell isolation, as well as serum-free culture media for the generation, differentiation, and expansion of NK cells.

Achieve efficient cell isolation with our immunomagnetic and immunodensity cell separation systems, EasySep™ and RosetteSep™. For full automation of EasySep™ NK cell isolations, RoboSep™ instruments can simultaneously process up to sixteen samples with minimal sample handling and no cross-contamination. Expand your purified NK cells with ImmunoCult™ NK Cell Expansion Kit, or obtain high yields of NK cells from hematopoietic stem and progenitor cells (HSPCs) or human pluripotent stem cells (hPSCs) using StemSpan™ NK Cell Generation Kit or STEMdiff™ NK Cell Kit, respectively.

NK cell isolation kits and culture media from STEMCELL have supported cutting-edge research, including genetically engineering NK cells for immunotherapy¹, analyzing NK cell function^{2,3}, and studying the role of NK cells in HIV pathogenesis⁴ and immunology⁵. Learn more about our specialized products for NK cell research or request a sample at www.stemcell.com/nkcells

- Pomeroy et al. (2020) Mol Ther 28(1): 52-63.
- Zhu S et al. (2014) Blood 123(3): 403-411.
- Briercheck EL et al. (2015) J Immunol 194(4): 1832-1840.
- Norman JN et al. (2011) Nat Immunol 12(10): 975-983.
- Huang Q-Q et al. (2015) Nat Commun 6: 7086.

Document # 10000010956 Version 01
For Internal Use Only Material # 28771

Species	Selection	Starting Sample	Product	Catalog #
Human	Negative	PBMC	EasySep™ Human NK Cell Isolation Kit	17955
			EasySep™ Direct Human NK Cell Isolation Kit	19665
			RosetteSep™ Human NK Cell Enrichment Cocktail	15025
	Positive	PBMC	EasySep™ Release Human CD56 Positive Selection Kit II	17755
			EasySep™ Human Buffy Coat CD56 Positive Selection Kit	17855
			EasySep™ Human CD56 Positive Selection Kit	18085
Mouse	Negative	Spleen or other tissues	EasySep™ Mouse NK Cell Isolation Kit	19855
	Positive	Spleen or other tissues	EasySep™ Mouse CD49b Positive Selection Kit	18755

Abbreviations

γ , common cytokine receptor γ -chain; AICL, activation-induced C-type lectin; BAT3, HLA-B associated transducer 3; CADM1, cell adhesion molecule 1; CD62L, CD62 ligand; CEACAM1, carcinoembryonic antigen-related cell adhesion molecule 1; CLEC, C-type lectin domain family; CMV, cytomegalovirus; CRACC, CD2-like-receptor activating cytotoxic cells; CRTAM, class I MHC-restricted T cell-associated molecule; CS1, CD2 subset 1; CXCL, CXC-chemokine ligand; DC, dendritic cell; DNAM1, DNAX accessory molecule 1; E4BP4, E4 promoter binding-protein 4; FcR, Fc receptor; HA, haemagglutinin; HCST, haematopoietic cell signal transducer; IFN, interferon; IL, interleukin; ILT, immunoglobulin-like transcript; ITAM, immunoreceptor tyrosine-based activation motif; ITIM, immunoreceptor tyrosine-based inhibitory motif; ITSM, immunoreceptor tyrosine-based switch motif;

KIR, killer cell immunoglobulin-like receptor; KLRG, killer cell lectin-like receptor subfamily G; LAIR1, leukocyte-associated immunoglobulin-like receptor 1; LIR1, leukocyte immunoglobulin-like receptor 1; LLT1, lectin-like transcript 1; mDC, mature DC; MIC, MHC class I polypeptide-related sequence; NCR, natural cytotoxicity receptor; NECL, nectin-like; NFIL3, nuclear factor IL-3-regulated protein; NKG2, NK group 2; NKR-P1A, NK cell receptor protein 1A; NTB-A, natural killer, T and B cell antigen; PSGL1, P-selectin glycoprotein ligand 1; PVR, poliovirus receptor; R, receptor; RAET11, retinoic acid receptor- γ t; SEMA4D, semaphorin 4D; SIGLEC, sialic acid-binding immunoglobulin-like lectin; SLAM, signalling lymphocytic activation molecule family; TNF, tumour necrosis factor; TYROBP, tyrosine protein tyrosine kinase-binding protein; ULBP1, UL16-binding protein 1; VEGF, vascular endothelial growth factor.

Affiliations

Eric Vivier and Sophie Ugolini are at the Centre d'Immunologie de Marseille-Luminy (CIML), INSERM-CNRS-Université de la Méditerranée, Marseille, France. E.V. is also at the Assistance Publique des Hôpitaux de Marseille, Hôpital de la Conception, Marseille, France. e-mails: vivier@ciml.univ-mrs.fr; ugolini@ciml.univ-mrs.fr

Acknowledgements

E.V. and S.U. are supported by grants from the European Research Council, Agence Nationale de la Recherche, Ligue Nationale contre le Cancer (Equipe labellisée 'La Ligue') and institutional grants from INSERM, CNRS and Université de la Méditerranée to the CIML.

The authors declare competing financial interests: see Web version for details.

Edited by Lucy Bird; copyedited by Isabel Woodman; designed by Simon Bradbrook. © 2010 Nature Publishing Group. <http://www.nature.com/nri/posters/nkcells>