

Chromosome Analysis Report

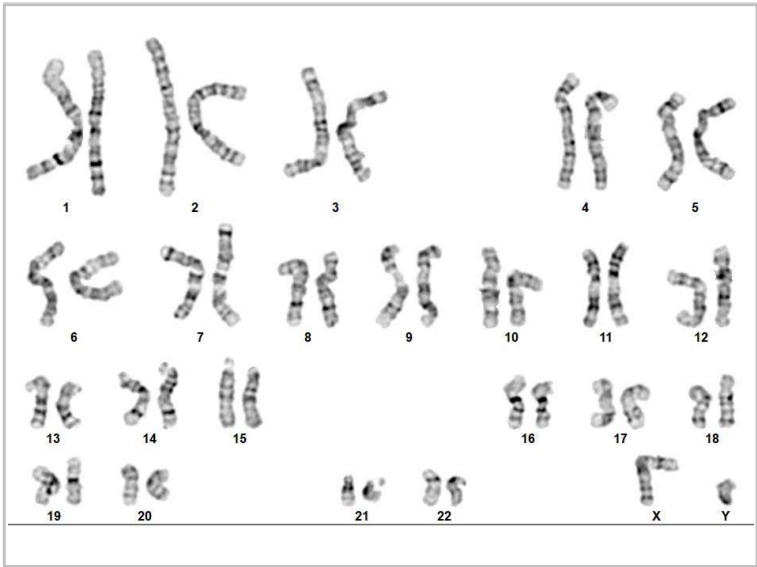
G-Banded Karyotype

Report Number: CG00-12345

Order Number: 0012345678

Investigator	Jane Doe
Institute	STEMCELL Technologies
Sample ID	SCTi004-A
Submitted Passage #	26
Sample Type	Human iPSC
Sample Received	November 26, 2024
Report Date	December 9, 2024

Karyogram:



Cell	5
Slide	1
Label	A1
Cells Counted	20
Total Analyzed	20
Total Karyotyped	20
Band Resolution	550

Result	46,XY[20]
--------	-----------

Reported Findings:

Cytogenetic analysis revealed a normal chromosome complement in all 20 metaphase cells examined. All cells demonstrated an XY sex chromosome complement.

Interpretation:

Normal 46,XY male karyotype.

Methodology:

Cell cultures were harvested, and chromosomes were analyzed using the Giemsa-Trypsin-Wright (GTW) banding method to identify structural and numerical chromosomal abnormalities. Results are reported according to the International System for Human Cytogenomic Nomenclature (ISCN) (2020) guidelines. Test results are for informational use only and not for diagnostic or therapeutic purposes.

Technical Considerations:

The karyotype assay involves the visualization of chromosomes to identify numerical and structural abnormalities and requires dividing cells in metaphase. Structural abnormalities smaller than 5 Mb may not be detected. Detection is limited to mosaicism in cell populations present at levels exceeding 10-20%. This test cannot exclude the presence of microdeletions, microduplications, subtle chromosome rearrangements, or other genetic abnormalities not detectable by routine chromosome analysis.

(Name of Quality Team Reviewer)

(Signature of Reviewer)

For additional support, please contact the STEMCELL Product and Scientific Support Team at 1-800-667-0322 or email techsupport@stemcell.com