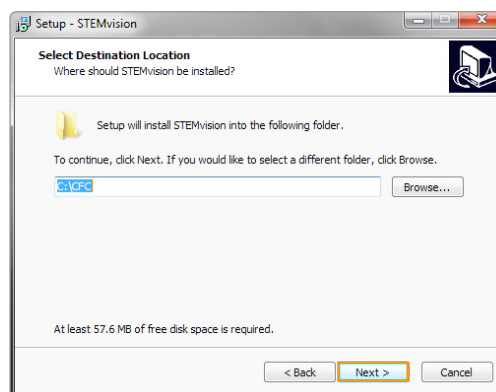
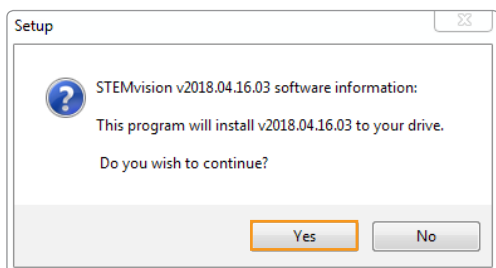




Installation Instructions for STEMvision™ Analyzer Update Software Version 2018.04.16.03

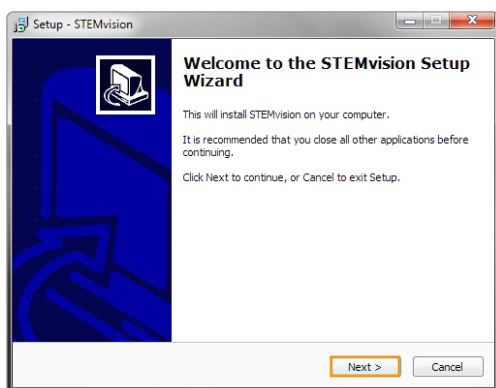
These instructions describe how to upgrade STEMvision™ Analyzer Software to Version 2.0.2.3 (color units) or Version 1.3.0.11 (monochrome units) using the STEMvision™ Analyzer Update Software Version 2018.04.16.03. A computer with an internet connection and USB flash drive are required to download and transfer the update to the computer connected to your STEMvision™ instrument, with the programmed STEMvision™ dongle inserted.

1. Visit www.stemcell.com/instruments to download the Analyzer Update under heading “STEMvision™ Analyzer Software Version 2.0.2.3 (Color) or 1.3.0.11 (Mono)”. Download file ‘STEMvisionAnalyzerUpdate.exe’. Save the file onto a USB flash drive.
2. Insert the USB flash drive, with the saved file, into the computer connected to the STEMvision™ instrument.
3. Run ‘STEMvisionAnalyzerUpdate.exe’. Ensure the programmed STEMvision™ dongle is properly inserted into a USB port of the STEMvision™ computer. Select **Yes** when prompted to begin the installation.
5. Specify the folder path for your current STEMvision™ Analyzer software installation (C:\CFC), and select **Next**.

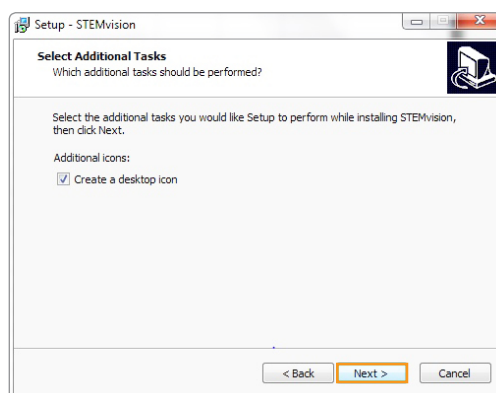


Note: The updater can only be used to update an existing installation. If you are attempting to install to a path that doesn't already contain an installation of the Analyzer, it will not work. Please select the folder (standard is C:\CFC) where your analyzer is located when installing the update.

4. Select **Next**.

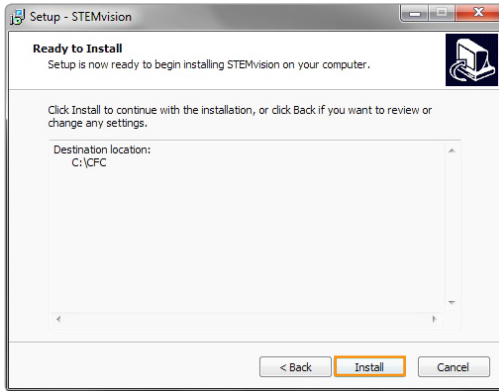


6. Continue by selecting **Next**.

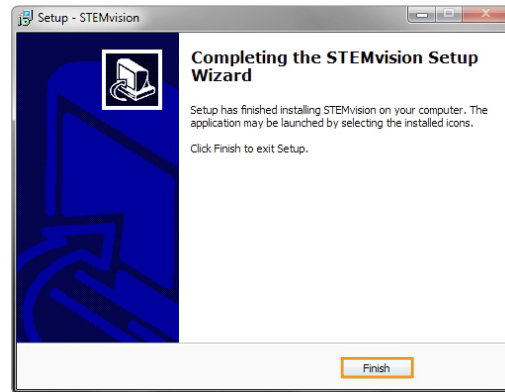




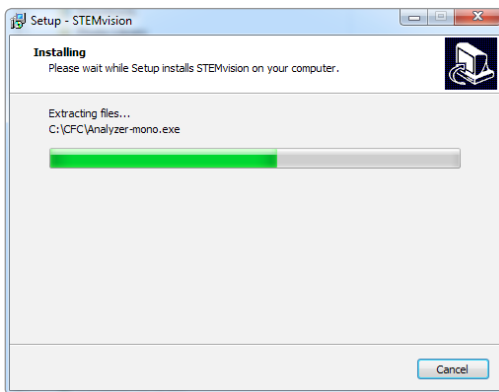
7. Select **Install**.



9. The STEMvision™ Analyzer update is now complete. Select **Finish**.



8. Wait while the installation occurs.



Note: Analyzer-mono.exe is the correct file name for both color and monochrome installations. The software will automatically determine which version (color or monochrome) is appropriate for the instrument being updated.