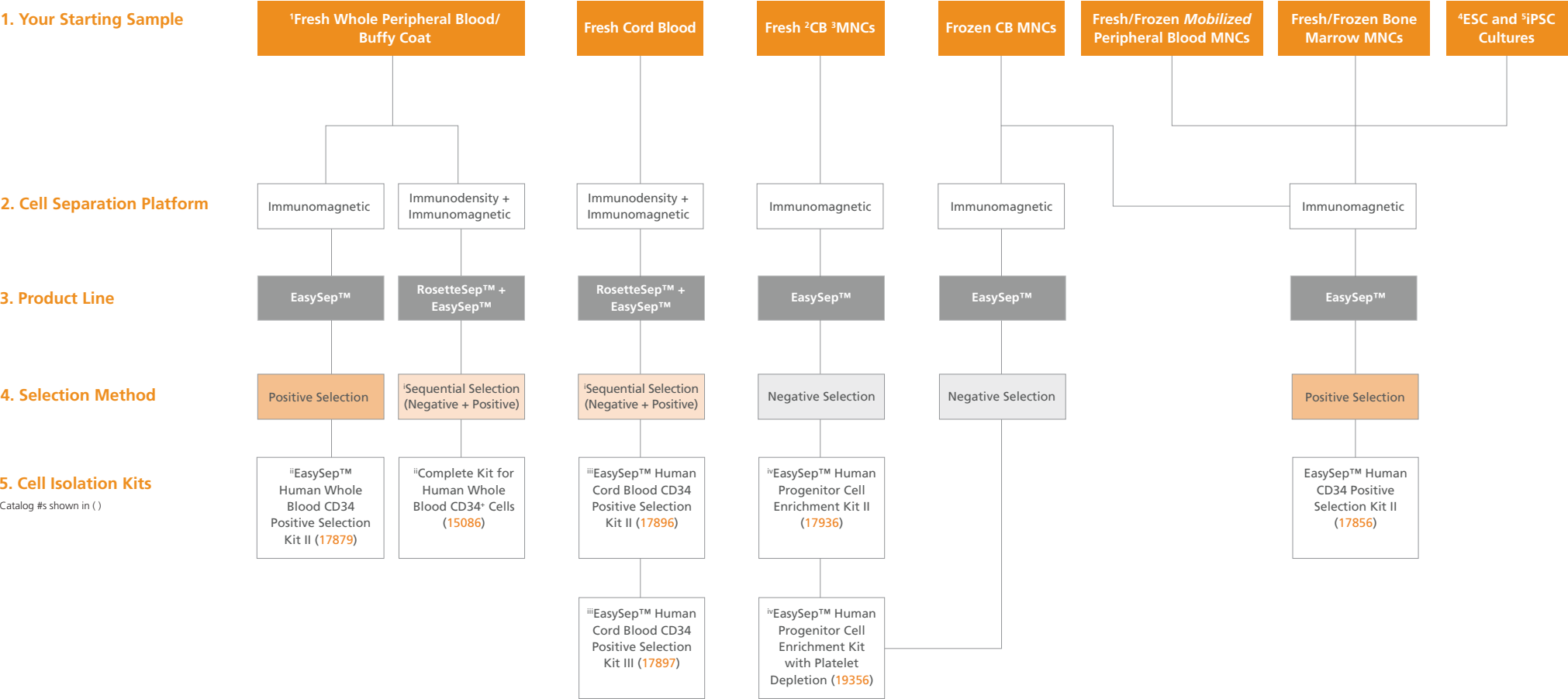


Human CD34⁺ Cell Isolation Product Selection

Explore the infographic below to find the correct human CD34⁺ cell isolation product for your application.



Legend

- 1: Fresh: Samples < 24 Hours Old
- 2: CB: Cord Blood
- 3: MNCs: Mononuclear Cells
- 4: ESC: Embryonic Stem Cell
- 5: iPSC: induced Pluripotent Stem Cell

Sequential Selection (Negative + Positive): First, hematopoietic progenitor cells are pre-enriched using the RosetteSep™ Enrichment Cocktail with antibodies recognizing specific cell surface markers on cells targeted for depletion. CD34⁺ cells are then selected using the EasySep™ Human CD34 Positive Selection Cocktail, which contains an antibody recognizing CD34. Reduce centrifugation time by 10 minutes by combining RosetteSep™ with SepMate™-50 tubes and make the enrichment of hematopoietic cells faster and easier.

ⁱCatalog# 17879 & 15086: When processing samples ≤ 4.5 mL, use #17879. When processing samples > 4.5 mL, use #15086. For optimal performance, use fresh whole peripheral blood collected within the last 24 hours and stored at room temperature (15 - 25°C).

ⁱⁱCatalog# 17896 vs. 17897: If isolating CD34⁺ cells from fresh cord blood samples, use EasySep™ Human Cord Blood CD34 Positive Selection Kit III (Cat# 17897) when platelet removal is not desired.

ⁱⁱⁱCatalog# 17936 vs. 19356: 17936 uses Dextran RapidSpheres™ (Cat #50102), that are different from the EasySep™ D Magnetic Particles (Cat #19250) used in 19356, which enables faster cell isolation protocols.

Copyright © 2021 by STEMCELL Technologies Inc. All rights reserved including graphics and images. STEMCELL Technologies & Design, STEMCELL Shield Design, Scientists Helping Scientists, RosetteSep, and EasySep are trademarks of STEMCELL Technologies Canada Inc. All other trademarks are the property of their respective holders. PRODUCTS ARE FOR RESEARCH USE ONLY AND NOT INTENDED FOR HUMAN OR ANIMAL DIAGNOSTIC OR THERAPEUTIC USES UNLESS OTHERWISE STATED. FOR ADDITIONAL INFORMATION ON QUALITY AT STEMCELL, REFER TO WWW.STEMCELL.COM/COMPLIANCE.