

# ALDEFLUOR™

For Detection and Isolation  
of Viable Stem & Progenitor Cells

## ALDEFLUOR™

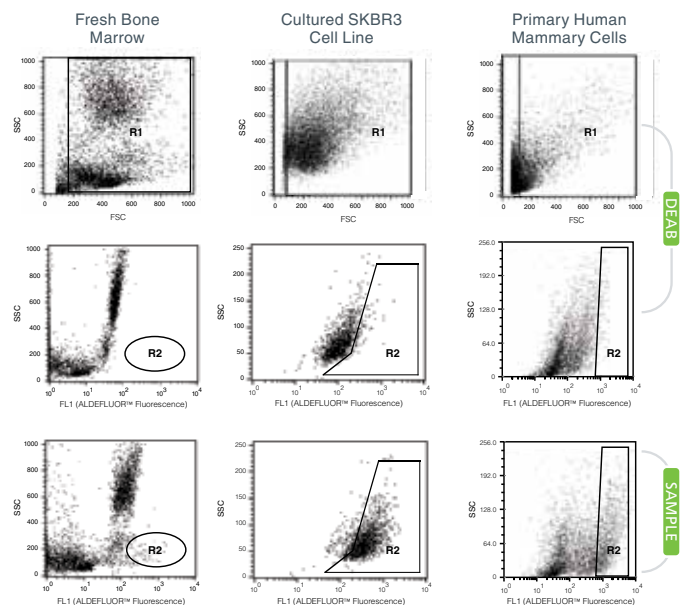
### A simple and rapid method to detect viable normal and cancer stem & progenitor cells

The ALDEFLUOR™ fluorescent reagent system offers a novel approach to the identification, evaluation, and isolation of stem and progenitor cells based on their expression of the enzyme aldehyde dehydrogenase (ALDH), rather than cell surface phenotype. The enzyme ALDH is highly expressed in cells shown to have properties of stem and progenitor cells,<sup>1-9</sup> including CD34<sup>+</sup> cells, CD133<sup>+</sup> cells, Kit<sup>+</sup> cells, Lineage-antigen negative (Lin<sup>-</sup>) cells, colony-forming cells, long-term culture-initiating cells, and NOD/SCID-repopulating cells. While ALDEFLUOR™ is optimized for use with human blood products,<sup>2-8</sup> it has been used for the identification of stem and progenitor cells from non-hematopoietic lineages, as well as from multiple species.<sup>9-14</sup>

### Why Choose ALDEFLUOR™?

- Detects normal and malignant precursor cells across multiple lineages, including hematopoietic, mammary, brain, head and neck, lung, liver, pancreas, cervix, ovaries, bladder, prostate, colon and thyroid regions
- Non-toxic, allowing for the downstream analysis of ALDH<sup>hi</sup> cells
- Compatible with immunophenotyping and counterstaining of cells with other fluorescent antibodies
- Highly reproducible, easy-to-use, and has a long reagent shelf life.

### Typical ALDEFLUOR™ FACS Profiles



[www.aldefluor.com](http://www.aldefluor.com)



Scientists Helping Scientists™ | [WWW.STEMCELL.COM](http://WWW.STEMCELL.COM)

DOCUMENT #28565 | VERSION 1.1.5 | JULY 2012

TOLL-FREE T. 1 800 667 0322 • T. +1 604 877 0713 • TOLL-FREE F. 1 800 567 2899 • F. +1 604 877 0704  
[ORDERS@STEMCELL.COM](mailto:ORDERS@STEMCELL.COM) • [INFO@STEMCELL.COM](mailto:INFO@STEMCELL.COM) • FOR FULL CONTACT DETAILS WORLDWIDE VISIT OUR WEBSITE

FOR RESEARCH USE ONLY. NOT FOR THERAPEUTIC OR DIAGNOSTIC USE.

## How Does ALDEFLUOR™ Work?

- Uncharged ALDH-substrate, BAAA (BODIPY® - aminoacetaldehyde), is taken up by living cells through passive diffusion.
- BAAA is converted by intracellular ALDH into a negatively charged reaction product BAA- (BODIPY® - aminoacetate), which is retained inside cells, causing the cells expressing high levels of ALDH to become brightly fluorescent.
- The brightly fluorescent ALDH-expressing cells (ALDH<sup>br</sup>) are detected in the green fluorescence channel (520-540 nm) of a standard flow cytometer.
- Since only cells with an intact cellular membrane can retain the ALDEFLUOR™ reaction product, only viable ALDH<sup>br</sup> cells are identified.

## Procedure

### TEST

Suspend cells in ALDEFLUOR™ assay buffer containing ALDH substrate (BAAA) and efflux inhibitor

### CONTROL

Transfer portion of cells with ALDEFLUOR™ to negative control tube containing ALDH enzyme inhibitor

#### 37°C 30-60 minutes

Only cells with ALDH activity convert BAAA to the negatively charged fluorescent product, BAA-

#### Optional

Store on ice and counterstain with fluorescent antibodies against cell surface markers

Measure fluorescence on a flow cytometer and (optionally) sort ALDH<sup>br</sup> cells

SCAN ME ▶



Video:  
Tissue-Specific Optimization of  
ALDEFLUOR™ Protocols  
[www.stemcell.com/OptALDEFLUOR](http://www.stemcell.com/OptALDEFLUOR)

## Order Now

PRODUCT	SIZE	CATALOG #
ALDEFLUOR™	1 Kit (40 Tests)	01700
ALDECOUNT™ IVD Assay Kit*	1 Kit	01721
ALDECOUNT™ RUO Assay Kit**	1 Kit	01720

\* FDA-cleared for detection & enumeration of ALDH<sup>br</sup>SSC<sup>br</sup> hematopoietic progenitors. US-only.

\*\* Detection and enumeration of ALDH<sup>br</sup>SSC<sup>br</sup> hematopoietic progenitors. Available worldwide.

## References

1. Storms RW, et al. Proc Natl Acad Sci USA, 1999;96:9118-9123
2. Fallon P, et al. Br J Haematol, 2003;122:99-108
3. Srouf EF. Blood, 2004;104:1597-1598
4. Hess DA, et al. Blood, 2004;104(6):1648-1655
5. Cai J, Weiss ML, Rao M. J Exp Hematol, 2004;32:585-598
6. Storms RW, et al. Blood, 2005;6:95-102
7. Lioznov MV, et al. Bone Marrow Transplant, 2005;35:909-914
8. Hess DA, et al. Blood, 2006;107(5):2162-2169
9. Mitchell JB, et al. Stem Cells, 2006;24(2):376-385
10. Cai J, et al. J Neurochem, 2004;88:212-226
11. Armstrong L, et al. Stem Cells, 2004;22:1142-1151
12. Laird DJ, De Tomaso AW, Weissman IL. Cell, 2005;123:1351-1360
13. Corti S, et al. Stem Cells, 2005; Nov 17 (epub ahead of print)
14. Corti S, et al. Hum Mol Genet, 2006;15(2):167-187

## Did You Know?

Selected publications using ALDEFLUOR™ to detect cancer precursor cells are available in a tissue-specific list at [www.aldefluor.com](http://www.aldefluor.com).