

RosetteSep[®] Procedure:

Ensure that blood sample, PBS + 2% FBS (Catalog #07905), density medium (See Notes & Tips, opposite page) and centrifuge are all at room temperature.

1. Add RosetteSep[®] Human CD8⁺ T Cell Enrichment Cocktail at **50 µL/mL** of whole blood* (e.g. for 2 mL of whole blood, add 100 µL of cocktail). Mix well.
*If using samples other than fresh whole blood, please see Notes and Tips.

2. Incubate 20 minutes at room temperature.

3. Dilute sample with an equal volume of PBS + 2% FBS and mix gently.

4. Layer the diluted sample on top of the density medium
OR

Layer the density medium underneath the diluted sample.

Be careful to minimize mixing of density medium and sample.

See table below for volume recommendations. With 50 mL centrifuge tubes, we suggest using a minimum of 15 mL density medium to make it easier to remove the enriched cell layer.

Recommended Volumes and Tube Sizes			
Whole Blood	PBS + 2% FBS	Density Medium	Tube Size
1 mL	1 mL	1.5 mL	5 mL
2 mL	2 mL	3 mL	14 mL
3 mL	3 mL	3 mL	14 mL
4 mL	4 mL	4 mL	14 mL
5 mL	5 mL	15 mL	50 mL
10 mL	10 mL	15 mL	50 mL
15 mL	15 mL	15 mL	50 mL

5. Centrifuge for 20 minutes at 1200 x g (See Notes and Tips) at room temperature, with the brake off.


6. Remove the enriched cells from the density medium : plasma interface.


Sometimes it is difficult to see the cells at the interface, especially when very rare cells are enriched. It is advisable to remove some of the density medium along with the enriched cells in order to ensure their complete recovery.

7. Wash enriched cells with PBS + 2% FBS. Repeat.

8. Use enriched cells as desired. We recommend that enriched samples are lysed with ammonium chloride to remove residual red blood cells prior to flow cytometric analysis (this can be done as one of the wash steps) or if residual red blood cells will interfere with subsequent assays.

PROCEDURE

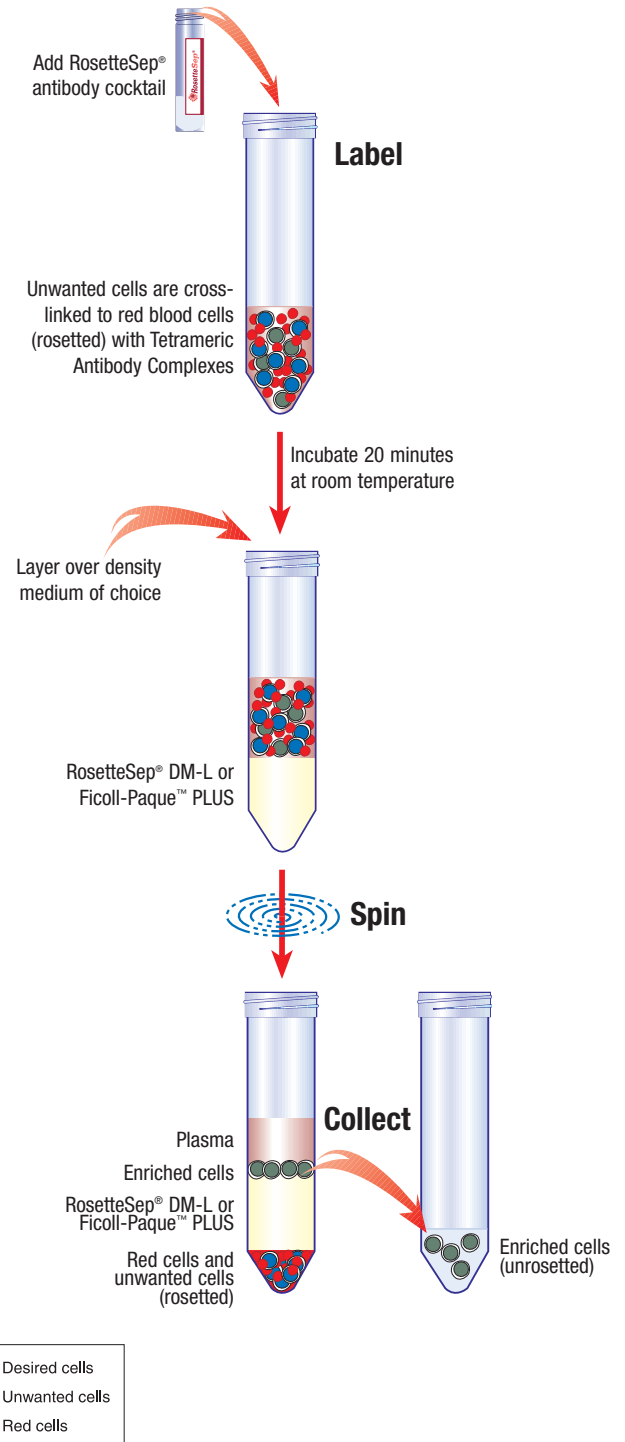




Version 1.2.0

Human CD8⁺ T Cell Enrichment Cocktail

CATALOG #15023/15063



StemCell Technologies

In North America
Tel: 1.604.877.0713
Fax: 1.604.877.0704
NA Toll Free Tel: 1.800.667.0322
NA Toll Free Fax: 1.800.567.2899
e-mail: info@stemcell.com
www.stemcell.com

In the United Kingdom
Tel: +44.(0).20.7537.7565
Fax: +44.(0).20.7515.5408
Toll Free within United Kingdom: 0800.731.27.14
Fax: 0800.731.27.13
e-mail: info@stemcellgb.com

In Europe
Tel: +33.(0).4.76.04.75.30
Fax: +33.(0).4.76.18.99.63
Toll Free within United Kingdom: e-mail: info@stemcellfrance.com

February 2006

FOR RESEARCH USE ONLY

#28572

Printed on recycled paper.

Catalog #15023	2 mL	For labeling 40 mL of whole blood
Catalog #15063	10 mL	For labeling 200 mL of whole blood

PRODUCT DESCRIPTION & APPLICATIONS:

The RosetteSep[®] Human CD8⁺ T cell enrichment cocktail is designed to enrich CD8⁺ T cells from whole blood.

ROSETTESEP[®] LABELING OF HUMAN CELLS:

The RosetteSep[®] antibody cocktail crosslinks unwanted cells in human whole blood to multiple red blood cells (RBCs), forming immunorosettes (Figure 1). This increases the density of the unwanted (rosetted) cells, such that they pellet along with the free RBCs when centrifuged over a buoyant density medium such as RosetteSep[®] DM-L or Ficoll-Paque[™] PLUS. Desired cells are never labeled with antibody and are easily collected as a highly enriched population at the interface between the plasma and the buoyant density medium.

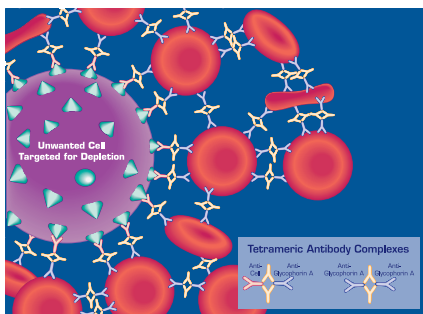


Figure 1.
Rosette of Unwanted Cell and RBCs Formed by RosetteSep[®] Tetrameric Antibody Complexes (TAC)

NOTES AND TIPS:

Recommended Medium. Phosphate Buffered Saline (PBS) + 2% Fetal Bovine Serum (FBS) (Catalog #07905).

Density Medium. Density medium refers to RosetteSep[®] DM-L (Catalog #15705) or Ficoll-Paque[™] PLUS (Catalog #07957). Recovery of lymphocytes may be improved with the use of StemCell's unique density medium, RosetteSep[®] DM-L.

Conversion of g to rpm. To convert g to rpm, use the following formula:

$$RPM = \sqrt{\frac{RCF}{(1.118 \times 10^{-5}) \times (\text{Radius})}}$$

Where: RCF = relative centrifugal force (g)
RPM = centrifuge speed in revolutions per minute
Radius = radius of rotor in cm

Samples Other than Whole Blood. Although RosetteSep[®] has been optimized for use with whole blood, cells can be enriched from other sources (i.e. buffy coat, leukaphereses). The concentration of nucleated cells in the sample should not exceed 5×10^7 cells/mL, and red blood cells (RBCs) should be present at a ratio of at least 30-50 RBCs per nucleated cell.

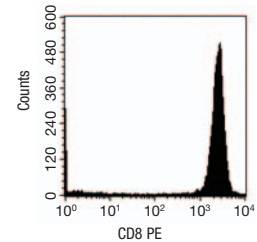
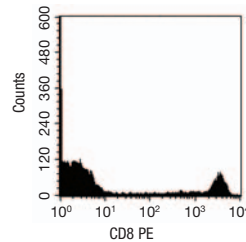
ASSESSING PURITY:

Purity of CD8⁺ T cells can be measured by flow cytometry after staining with a fluorochrome-conjugated anti-CD8 antibody (e.g. PE anti-CD8, Catalog #10505).

TYPICAL ROSETTESEP[®] CD8⁺ T CELL ENRICHMENT PROFILE:

Start: 16% CD8⁺ Cells

Enriched: 91% CD8⁺ Cells
49% Recovery of CD8⁺ Cells



Starting with fresh peripheral blood, the CD8⁺ cell content of the enriched fraction is typically $84 \pm 9\%$.

COMPONENT DESCRIPTION:

RosetteSep[®] Human CD8⁺ T Cell Enrichment Cocktail. code #15023C.1

This cocktail contains a combination of mouse and rat monoclonal antibodies purified from mouse ascites fluid or hybridoma culture supernatant, by affinity chromatography using Protein A or Protein G Sepharose. These antibodies are bound in bispecific TAC which are directed against cell surface antigens on human hematopoietic cells (CD4, CD16, CD19, CD36, CD56, CD66b, TCR γ/δ) and glycophorin A on red blood cells. The mouse monoclonal antibody subclass is IgG₁. It should be kept in mind that this product is a biological reagent, and as such cannot be completely characterized or quantified. Some variability is unavoidable.

STABILITY AND STORAGE:

RosetteSep[®] Human CD8⁺ T Cell Enrichment Cocktail.

Stable at 4°C for two years. Do not freeze this product. Contents sterile in unopened tube. This product may be shipped at room temperature, and should be refrigerated upon receipt.

See Material Safety Data Sheet for more information.

StemCell Technologies

In North America Tel: 1.604.877.0713 Fax: 1.604.877.0704 NA Toll Free Tel: 1.800.667.0322 NA Toll Free Fax: 1.800.567.2899 e-mail: info@stemcell.com www.stemcell.com	In the United Kingdom Tel: +44.(0).20.7537.7565 Fax: +44.(0).20.7515.5408 Toll Free within United Kingdom: Tel: 0800.731.27.14 Fax: 0800.731.27.13 e-mail: info@stemcellgb.com	In Europe Tel: +33.(0).4.76.04.75.30 Fax: +33.(0).4.76.18.99.63 e-mail: info@stemcellfrance.com
--	---	---

FOR RESEARCH USE ONLY

#28572

Printed on recycled paper.

Ficoll[™] and Ficoll-Paque[™] PLUS are trademarks of GE Healthcare Ltd.