

Culture and Quantification of CFU-Hill Colonies
Using **CFU-Hill** Liquid Medium Kit

For Research Use Only. Not For Therapeutic or Diagnostic Use.

In North America

Toll-Free T. 1.800.667.0322
Toll-Free F. 1.800.567.2899
T. 1.604.877.0713
F. 1.604.877.0704
E. info@stemcell.com
E. orders@stemcell.com

In Europe

Toll-Free T. 00.800.7836.2355
Toll-Free F. 00.800.7836.2300
T. +33 (0)4.76.04.75.30
F. +33 (0)4.76.18.99.63
E. info.eu@stemcell.com

In Australia

Toll-Free T. 1.800.060.350
F. +61 (03)9338.4320
E. info.aus@stemcell.com

In Singapore

T. 65.6776.7754
F. 65.6776.7114
E. info.sg@stemcell.com

STEMCELL Technologies

Version 3.0.0
March 2010
Catalog #28712

Table of Contents

1.	Introduction.....	1
2.	Materials and Storage/Handling	2
2.1.	CFU-Hill Liquid Medium Kit Product Description	2
2.2.	Storage/Stability.....	2
2.3.	Equipment and Reagents Required (Not Included).....	2
2.3.1.	Equipment.....	2
2.3.2.	Reagents and Supplies.....	3
2.4.	Preparation of CFU-Hill Liquid Medium	3
3.	Protocol	4
3.1.	Outline of Procedure	4
3.2.	5 Day CFU-Hill Colony Assay - Day 0	5
3.3.	5 Day CFU-Hill Colony Assay - Day 2	7
3.4.	5 Day CFU-Hill Colony Assay - Day 5	8
3.5.	Fixing and Staining CFU-Hill Colonies	9
4.	Peripheral Blood-Derived CFU-Hill Colony Frequencies in the General Population.....	10
5.	References	10

For Research Use Only. Not For Therapeutic or Diagnostic Use.

In North America

Toll-Free T. 1.800.667.0322
Toll-Free F. 1.800.567.2899
T. 1.604.877.0713
F. 1.604.877.0704
E. info@stemcell.com
E. orders@stemcell.com

In Europe

Toll-Free T. 00.800.7836.2355
Toll-Free F. 00.800.7836.2300
T. +33 (0)4.76.04.75.30
F. +33 (0)4.76.18.99.63
E. info.eu@stemcell.com

In Australia

Toll-Free T. 1.800.060.350
F. +61 (03)9338.4320
E. info.aus@stemcell.com

In Singapore

T. 65.6776.7754
F. 65.6776.7114
E. info.sg@stemcell.com

STEMCELL Technologies

Version 3.0.0
March 2010
Catalog #28712

1. Introduction

Blood vessel development is a regulated process involving the proliferation and migration of endothelial cells from adjacent pre-existing blood vessels (angiogenesis) or following differentiation of angioblasts or endothelial progenitor cells (EPCs) from mesodermal precursors (vasculogenesis).¹⁻³ EPCs were originally thought to be present only during embryonic development. However evidence accumulated in the past several years suggests that they can persist in the bone marrow and/or in circulation into adult life.³ This has generated interest in the use of EPCs for neovascularization of ischemic or injured tissue and for the clinical assessment of risk factors for various diseases.⁴⁻⁶

Subsequently, many distinct populations of cells that appear to correlate with or influence postnatal vasculogenesis have been identified, and these distinct cells have all been referred to as EPCs.^{1,4,7-10} The mechanisms by which these putative EPCs contribute to vasculogenesis remain unclear, but may include direct contribution via proliferation and integration as endothelial cells, or by indirect means through secretion of angiogenic growth factors (paracrine effect). These latter cells may be more properly referred to an "angiogenic cells", i.e. cells that support or augment angiogenesis and/or vasculogenesis, without actually differentiating into cells that form part of the vascular network. Therefore while numerous sources of cells provide measureable angiogenic function after transplantation, they may not directly produce endothelial cells and/or they may not be integrated into the endothelium.^{11,12}

Studies to purify and characterize EPCs and other angiogenic cells have been difficult due to the lack of cell surface antigens or markers that distinguish these cells from mature vascular wall-derived endothelial cells and from subsets of hematopoietic cells.^{1,2} Many of the markers associated with EPCs, including LDL uptake, lectin binding, and CD34/CD133/VEGFR2/CD31/CD105/CD144 expression are also found on hematopoietic cells, making the distinction between EPCs and other specific cell populations difficult.^{1,3} Alternatively, some investigators have defined putative EPCs based on their different culture properties *in vitro*. Yoder *et al.* have delineated a hierarchy of putative EPCs by determining their proliferative potential, analogous to the hierarchy established for the hematopoietic system.⁹

A cell culture assay has been developed by Hill *et al.*⁴ to assess the correlation between the frequency of a specific population of circulating putative angiogenic cells and multiple clinical factors. We have standardized this 5 day assay and refer to it as the 5 Day CFU-Hill Colony Assay. Unique colonies that are formed in the 5 Day CFU-Hill Colony Assay are referred to as colony-forming unit-Hill colonies or CFU-Hill colonies. The CFU-Hill Liquid Medium Kit has been developed specifically to support the culture and quantification of CFU-Hill colonies. In healthy individuals, the number of CFU-Hill colonies has been found to negatively correlate with the Framingham cardiovascular risk score, and to positively correlate with vascular function as measured by flow-mediated brachial artery reactivity.⁴ A number of recent reports have used the 5 Day CFU-Hill Colony Assay and/or CFU-Hill Liquid medium Kit (formerly known as EndoCult[®]) in investigations into CFU-Hill colony frequency and coronary artery disease,^{7,14,15} rheumatoid arthritis,¹⁶ peripheral arterial disease,¹⁷ diabetes,¹⁸ and chronic obstructive pulmonary disease.¹⁹

The CFU-Hill Medium does not support the culture of mature endothelial cell lines, including human umbilical vein - endothelial cells (HUV-EC-C; ATCC CRL-1730).

The CFU-Hill Liquid Medium Kit includes CFU-Hill Basal Medium and CFU-Hill Medium Supplements that have been pre-screened and tested in the 5 Day CFU-Hill Colony Assay. In this assay, mononuclear cells are isolated by density gradient centrifugation and plated on fibronectin-coated 6-well plates in CFU-Hill Liquid Medium for two days to remove mature endothelial cells and some monocytes. After two days, the non-adherent cells are harvested, enumerated and replated on fibronectin-coated 24-well plates. Colonies are evaluated and enumerated 3 days later. A CFU-Hill colony is defined as a central core of round cells with radiating elongated spindle-like cells at the periphery.

For Research Use Only. Not For Therapeutic or Diagnostic Use.

In North America	In Europe	In Australia	In Singapore	STEMCELL Technologies
Toll-Free T. 1.800.667.0322	Toll-Free T. 00.800.7836.2355	Toll-Free T. 1.800.060.350	T. 65.6776.7754	Version 3.0.0
Toll-Free F. 1.800.567.2899	Toll-Free F. 00.800.7836.2300	F. +61 (0)39338.4320	F. 65.6776.7114	March 2010
T. 1.604.877.0713	T. +33 (0)4.76.04.75.30	E. info.aus@stemcell.com	E. info.sg@stemcell.com	Catalog #28712
F. 1.604.877.0704	F. +33 (0)4.76.18.99.63			
E. info@stemcell.com	E. info.eu@stemcell.com			
E. orders@stemcell.com				

2. Materials and Storage/Handling

2.1. CFU-Hill Liquid Medium Kit Product Description

- The CFU-Hill Liquid Medium Kit* (Catalog #05900/05950) includes:

Component	Catalog #05900	Catalog #05950
CFU-Hill Basal Medium	80 mL	5 x 80 mL
CFU-Hill Supplements	20 mL	5 x 20 mL

*CFU-Hill Liquid Medium was formerly known as EndoCult®. The name was changed to accurately reflect the application of this product.

2.2. Storage/Stability

- CFU-Hill Basal Medium is stable at 2 - 8°C for 1 year.
- CFU-Hill Supplements are stable at -20°C for at least 2 years.
- CFU-Hill Liquid Medium (Basal Medium and Supplements combined) is stable at 2 - 8°C for one month.

2.3. Equipment and Reagents Required (Not Included)

2.3.1. Equipment

- Biohazard safety cabinet certified for Level II handling of biological materials
- Low speed centrifuge. To convert x g to rpm, use the following formula:

$$\text{RPM} = \sqrt{\frac{\text{RCF}}{(1.118 \times 10^{-5}) \times (\text{Radius})}}$$

Where: RCF = relative centrifugal force (g)
RPM = centrifuge speed in revolutions per minute
Radius = radius of rotor in cm

- 37°C incubator with humidity and gas control to maintain >95% humidity and an atmosphere of 5% CO₂ in air
- Pipette-aid
- Micropipettors P10, P200, and P1000 with sterile disposable plastic tips
- Hemocytometer
- Routine light microscope for hemacytometer cell counts
- Inverted microscope with flatfield objectives and eye pieces to give object magnification of approximately 25 - 50X

For Research Use Only. Not For Therapeutic or Diagnostic Use.

In North America

Toll-Free T. 1.800.667.0322
Toll-Free F. 1.800.567.2899
T. 1.604.877.0713
F. 1.604.877.0704
E. info@stemcell.com
E. orders@stemcell.com

In Europe

Toll-Free T. 00.800.7836.2355
Toll-Free F. 00.800.7836.2300
T. +33 (0)4.76.04.75.30
F. +33 (0)4.76.18.99.63
E. info.eu@stemcell.com

In Australia

Toll-Free T. 1.800.060.350
F. +61 (03)9338.4320
E. info.aus@stemcell.com

In Singapore

T. 65.6776.7754
F. 65.6776.7114
E. info.sg@stemcell.com

STEMCELL Technologies

Version 3.0.0
March 2010
Catalog #28712

2.3.2. Reagents and Supplies

- 50 mL polypropylene tube (BD Catalog #352070 or equivalent)
- 15 mL polypropylene tube (Corning Catalog #430053 or equivalent)
- 5 mL polypropylene tube (BD Catalog #352058 or equivalent)
- 3% Acetic Acid with Methylene Blue (Catalog #07060)
- Ficoll-Paque™ PLUS (Catalog #07907/07957)*
- Phosphate Buffered Saline (PBS; Catalog #37350)
- PBS with 2% FBS (Catalog #07905)
- 6-well fibronectin-coated plate (BD Catalog #354402)**
- 24-well fibronectin-coated plate (BD Catalog #354411)**
- Penicillin and Streptomycin Solution (Catalog #07500) optional
- Methanol (Anachemia Catalog #56902-546)
- Giemsa Staining Solution (EMD Chemicals Catalog #R03055/76)
- Atlas of CFU-Hill Colonies (Catalog# 28711)

*Ficoll-Paque™ PLUS is a trademark of GE Healthcare Ltd.

**Fibronectin-coated plates are stored at 2 - 8°C and should be brought to room temperature prior to use.

2.4. Preparation of CFU-Hill Liquid Medium

1. Thaw CFU-Hill Supplements under refrigeration (2 - 8°C) overnight or at room temperature.
2. Prepare CFU-Hill Liquid Medium by adding the entire volume (20 mL) of CFU-Hill Supplements to the bottle (80 mL) of CFU-Hill Basal Medium or add 2 mL of CFU-Hill Supplements to every 8 mL of CFU-Hill Basal Medium (1/5 dilution). The CFU-Hill Liquid Medium will be stable at 2 - 8°C for one month.
3. Any thawed CFU-Hill Supplements not used immediately should be dispensed into working aliquots and frozen at -20°C. These aliquots can be thawed as described in Step 1 and then stored at 2 - 8°C for no longer than one month. Do not freeze-thaw supplements more than twice.
4. This product does not contain antibiotics. If desired, add Penicillin and Streptomycin to achieve a final concentration of 100 U/mL of Penicillin and 100 µg/mL of Streptomycin.

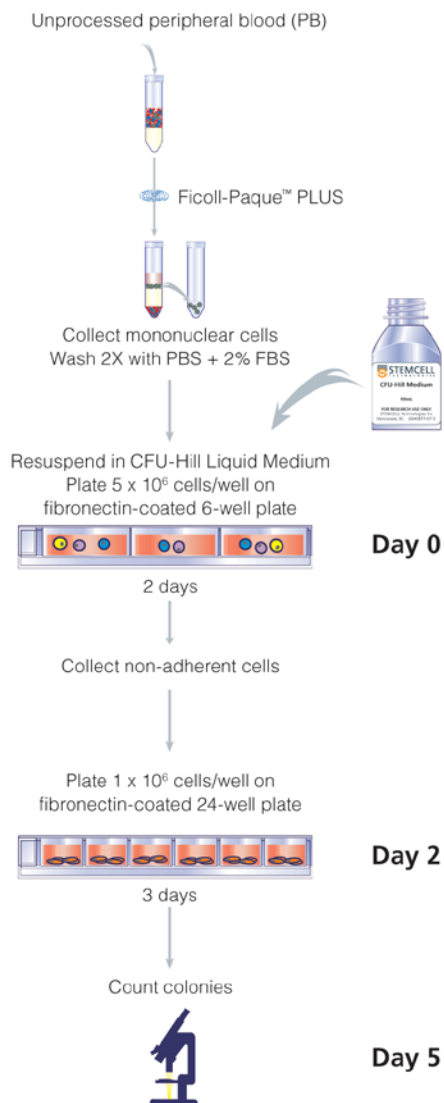
For Research Use Only. Not For Therapeutic or Diagnostic Use.

In North America	In Europe	In Australia	In Singapore	STEMCELL Technologies
Toll-Free T. 1.800.667.0322	Toll-Free T. 00.800.7836.2355	Toll-Free T. 1.800.060.350	T. 65.6776.7754	Version 3.0.0
Toll-Free F. 1.800.567.2899	Toll-Free F. 00.800.7836.2300	F. +61 (03)9338.4320	F. 65.6776.7114	March 2010
T. 1.604.877.0713	T. +33 (0)4.76.04.75.30	E. info.aus@stemcell.com	E. info.sg@stemcell.com	Catalog #28712
F. 1.604.877.0704	F. +33 (0)4.76.18.99.63			
E. info@stemcell.com	E. info.eu@stemcell.com			
E. orders@stemcell.com				

3. Protocol

3.1. Outline of Procedure

OUTLINE OF PROCEDURE. 5 Day CFU-Hill Colony Assay



For Research Use Only. Not For Therapeutic or Diagnostic Use.

In North America

Toll-Free T. 1.800.667.0322
Toll-Free F. 1.800.567.2899
T. 1.604.877.0713
F. 1.604.877.0704
E. info@stemcell.com
E. orders@stemcell.com

In Europe

Toll-Free T. 00.800.7836.2355
Toll-Free F. 00.800.7836.2300
T. +33 (0)4.76.04.75.30
F. +33 (0)4.76.18.99.63
E. info.eu@stemcell.com

In Australia

Toll-Free T. 1.800.060.350
F. +61 (03)9338.4320
E. info.aus@stemcell.com

In Singapore

T. 65.6776.7754
F. 65.6776.7114
E. info.sg@stemcell.com

STEMCELL Technologies

Version 3.0.0
March 2010
Catalog #28712

3.2. 5 Day CFU-Hill Colony Assay - Day 0

Note: For optimal results, use only fresh peripheral blood (PB) in the in vitro culture assay.

1. Collect PB aseptically using an anti-coagulant to avoid clotting or clumping of the sample. Sodium heparin, ACD (acid citrate dextrose), K₃ EDTA or equivalent may be used.

This protocol requires 10⁷ mononuclear cells per sample for each experiment. For each PB sample, two Vacutainer[®] Collection Tubes (6 - 7 mL volume) should be sufficient for each experiment.

2. Add anti-coagulant treated PB to a 50 mL polypropylene tube. Count nucleated cells using 3% Acetic Acid with Methylene Blue. Perform a 1/20 dilution on a sample of the cells (e.g. 10 µL of cells and 190 µL of Acetic Acid) and count cells using a hemacytometer.

This provides a total blood cell count prior to Ficoll-Paque[™] PLUS density gradient centrifugation.

3. Prepare a mononuclear cell suspension by light density separation using Ficoll-Paque[™] PLUS. For a more detailed protocol consult the Product Information Sheet (PIS) for Ficoll-Paque[™] PLUS on our website (www.stemcell.com). Briefly:

- a. Add equal volume of 1X Phosphate Buffered Saline to the 50 mL tube containing the PB sample (e.g. For PB samples, two Vacutainer[®] Collection tubes will provide 11 - 14 mL of blood, therefore add 11 - 14 mL of PBS).

Consult the Product Information Sheet for Ficoll-Paque[™] PLUS for recommended blood and Ficoll-Paque[™] PLUS volumes and appropriate tube sizes.

- b. Add 15 mL of Ficoll-Paque[™] PLUS to a new 50 mL polypropylene tube.
 - c. Carefully layer the diluted PB on top of the 15 mL of Ficoll-Paque[™] PLUS.
Note: Do not mix the Ficoll-Paque[™] PLUS and diluted PB sample.
 - d. Centrifuge tube(s) at 300 x g (see note regarding centrifuges in 2.3.1. Equipment) for 25 minutes at room temperature with the brake turned to the "off" position. With the brake off, the mononuclear cells will remain as a distinct layer for ease of collection.
 - e. After centrifugation, carefully collect the mononuclear cells (layer between the Ficoll-Paque[™] PLUS and plasma) into a new 50 mL polypropylene tube. Bring to a final volume of 40 mL with PBS with 2% fetal bovine serum. Centrifuge at 300 x g for approximately 7 minutes at room temperature with the brake on to pellet the cell suspension.
4. Remove supernatant, tap the tube to resuspend cells and add 6 mL of PBS with 2% FBS to the tube. Transfer the cell suspension to a new 15 mL centrifuge tube. Rinse the 50 mL tube with an additional 6 mL of PBS with 2% FBS and transfer the cell suspension to the same 15 mL tube. Spin at 300 x g for 7 minutes at room temperature with the brake on to pellet the cell suspension.

Remove supernatant and resuspend pellet in 1 - 3 mL (depending on size of the cell pellet) of CFU-Hill Liquid Medium (refer to Section 2.4 Preparation of CFU-Hill Liquid Medium). Count nucleated cells using 3% Acetic Acid with Methylene Blue by performing a 1/20 dilution on a sample of the cells (e.g. 10 µL of cells and 190 µL of Acetic Acid) and count cells using a hemacytometer.

The percent recovery following Ficoll-Paque[™] PLUS density gradient centrifugation can be calculated by: (total cell count after Ficoll-Paque[™] PLUS / total cell count before Ficoll-Paque[™] PLUS) x 100%.

Vacutainer[®] is a registered trademark of Becton, Dickinson and Company.

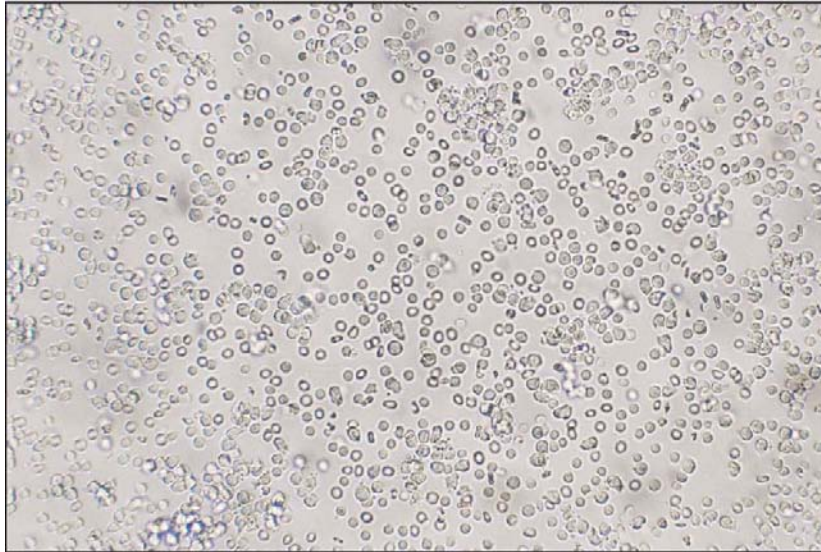
For Research Use Only. Not For Therapeutic or Diagnostic Use.

In North America	In Europe	In Australia	In Singapore	STEMCELL Technologies
Toll-Free T. 1.800.667.0322	Toll-Free T. 00.800.7836.2355	Toll-Free T. 1.800.060.350	T. 65.6776.7754	Version 3.0.0
Toll-Free F. 1.800.567.2899	Toll-Free F. 00.800.7836.2300	F. +61 (03)9338.4320	F. 65.6776.7114	March 2010
T. 1.604.877.0713	T. +33 (0)4.76.04.75.30	E. info.aus@stemcell.com	E. info.sg@stemcell.com	Catalog #28712
F. 1.604.877.0704	F. +33 (0)4.76.18.99.63			
E. info@stemcell.com	E. info.eu@stemcell.com			
E. orders@stemcell.com				

5. Add 2 mL/well of CFU-Hill Liquid Medium to a 6-well fibronectin-coated plate. Perform the experiment in duplicate using 2 wells of a 6-well plate per sample.
6. Plate 5×10^6 mononuclear cells per well in the 6-well fibronectin-coated plate in duplicate and incubate for two days at 37°C, 5% CO₂ with ≥95% humidity.

This step removes adherent cells.

Figure 1: Peripheral Blood Mononuclear Cells in CFU-Hill Liquid Medium at Day 1



Magnification = 250X

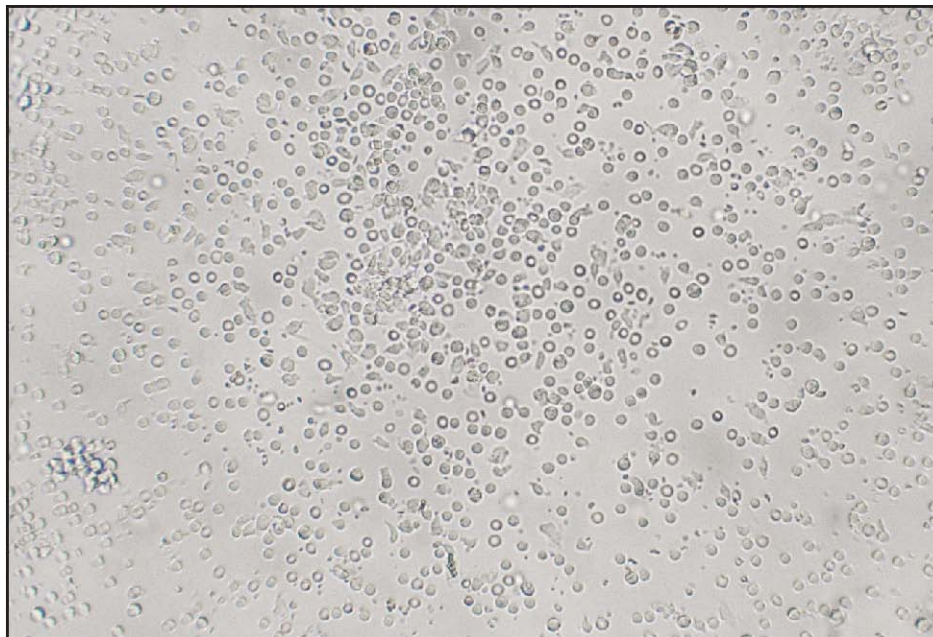
For Research Use Only. Not For Therapeutic or Diagnostic Use.

In North America	In Europe	In Australia	In Singapore	STEMCELL Technologies
Toll-Free T. 1.800.667.0322	Toll-Free T. 00.800.7836.2355	Toll-Free T. 1.800.060.350	T. 65.6776.7754	Version 3.0.0
Toll-Free F. 1.800.567.2899	Toll-Free F. 00.800.7836.2300	F. +61 (03)9338.4320	F. 65.6776.7114	March 2010
T. 1.604.877.0713	T. +33 (0)4.76.04.75.30	E. info.aus@stemcell.com	E. info.sg@stemcell.com	Catalog #28712
F. 1.604.877.0704	F. +33 (0)4.76.18.99.63			
E. info@stemcell.com	E. info.eu@stemcell.com			
E. orders@stemcell.com				

3.3. 5 Day CFU-Hill Colony Assay - Day 2

After two days, numerous cell cells will adhere to the bottom of the well. The non-adherent cells contain the CFU-Hill colony-forming cells, which will be harvested at day 2 and further cultured for an additional 3 days to allow formation of CFU-Hill colonies.

Figure 2: Peripheral Blood Mononuclear Cells in CFU-Hill Liquid Medium at Day 2



Magnification = 250X

Harvest the non-adherent cells containing the CFU-Hill colony-forming cells and culture for an additional three days to allow formation of CFU-Hill colonies.

1. Collect the non-adherent cells by pipetting the medium in each well up and down 3 - 4 times using a 2 mL pipette. This will help to remove any non-adherent cells that transiently attach to the adherent population. Transfer the non-adherent cells from each well into individual 5 mL tubes and count nucleated cells using 3% Acetic Acid with Methylene Blue at a 1/10 dilution (e.g. 10 μ L sample in 90 μ L acetic acid).

Do not wash or centrifuge the cells at this stage.

2. From each well, plate 1×10^6 cells/well in duplicate in a 24-well fibronectin-coated plate. Add fresh CFU-Hill Liquid Medium to a final volume of 1.0 mL per well.
3. Incubate at 37°C, 5% CO₂ with $\geq 95\%$ humidity for 3 days.

For Research Use Only. Not For Therapeutic or Diagnostic Use.

In North America

Toll-Free T. 1.800.667.0322
Toll-Free F. 1.800.567.2899
T. 1.604.877.0713
F. 1.604.877.0704
E. info@stemcell.com
E. orders@stemcell.com

In Europe

Toll-Free T. 00.800.7836.2355
Toll-Free F. 00.800.7836.2300
T. +33 (0)4.76.04.75.30
F. +33 (0)4.76.18.99.63
E. info.eu@stemcell.com

In Australia

Toll-Free T. 1.800.060.350
F. +61 (03)9338.4320
E. info.aus@stemcell.com

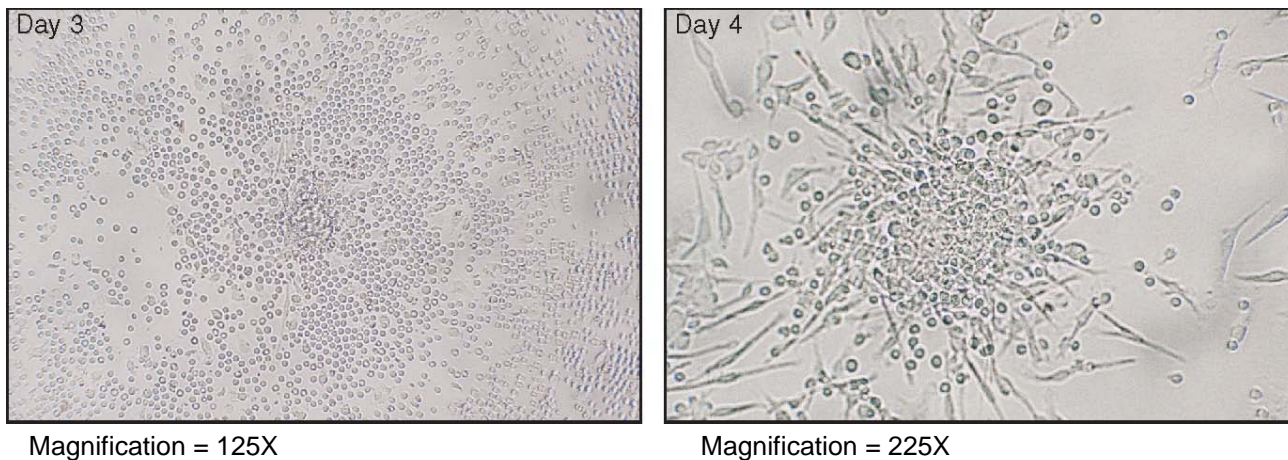
In Singapore

T. 65.6776.7754
F. 65.6776.7114
E. info.sg@stemcell.com

STEMCELL Technologies

Version 3.0.0
March 2010
Catalog #28712

Figure 3: CFU-Hill Colonies in CFU-Hill Liquid Medium at Days 3 and 4



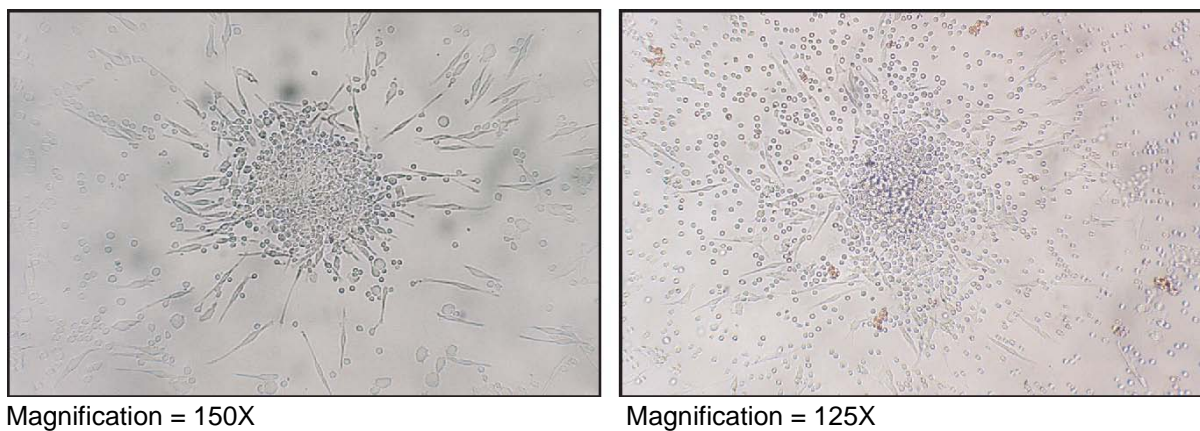
3.4. 5 Day CFU-Hill Colony Assay - Day 5

On day 5 of the assay, count the number of colonies per well for each sample. CFU-Hill colonies are defined as a central core of round cells with radiating elongated spindle-like cells at the periphery.

Notes:

- Colonies without the CFU-Hill morphology may also be present but are not scored as CFU-Hill colonies.
- Cultures grown for more than 5 days may become difficult or impossible to score.
- Fixing and staining cultures at day 5 can make colony scoring easier and generates a permanent record that can be scored at a later date. Refer to Section 3.5 for a protocol on fixing and staining of the colonies.

Figure 4: CFU-Hill Colonies in CFU-Hill Liquid Medium from Peripheral Blood at Day 5



The Atlas of CFU-Hill Colonies contains additional photographs of representative CFU-Hill colonies derived from human peripheral blood to further assist in their identification and evaluation.

For Research Use Only. Not For Therapeutic or Diagnostic Use.

In North America

Toll-Free T. 1.800.667.0322
Toll-Free F. 1.800.567.2899
T. 1.604.877.0713
F. 1.604.877.0704
E. info@stemcell.com
E. orders@stemcell.com

In Europe

Toll-Free T. 00.800.7836.2355
Toll-Free F. 00.800.7836.2300
T. +33 (0)4.76.04.75.30
F. +33 (0)4.76.18.99.63
E. info.eu@stemcell.com

In Australia

Toll-Free T. 1.800.060.350
F. +61 (03)9338.4320
E. info.aus@stemcell.com

In Singapore

T. 65.6776.7754
F. 65.6776.7114
E. info.sg@stemcell.com

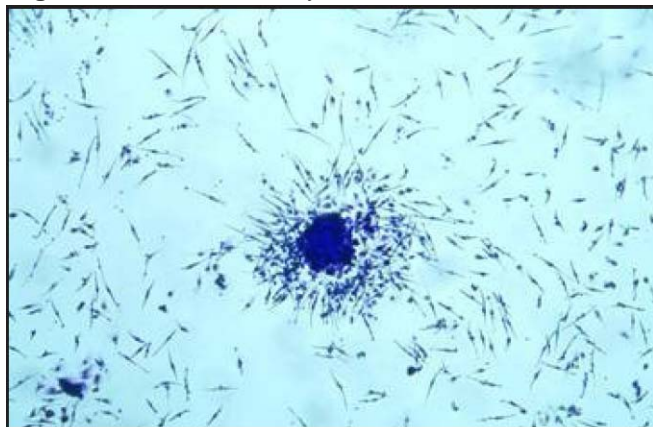
STEMCELL Technologies

Version 3.0.0
March 2010
Catalog #28712

3.5. Fixing and Staining CFU-Hill Colonies

1. At day 5, pipette the medium in one well of a 24-well plate up and down gently to suspend non-adherent cells. Remove and discard medium containing non-adherent cells.
2. Wash the wells by gently adding approximately 1 mL of PBS and pipetting up and down gently. Remove the PBS and discard.
3. Fix the cultures by gently adding 300 μ L Methanol by 'dribbling' the methanol down the side of wells. Methanol is hazardous. Take appropriate precautions.
4. Incubate with methanol 2 - 5 minutes.
5. Remove methanol and discard in appropriate organic waste container.
6. Stain the cultures after fixation by adding approximately 300 μ L of Giemsa Staining Solution diluted 1/20 in distilled water.
7. Incubate approximately 3 - 5 minutes.
8. Aspirate Giemsa Staining Solution.
9. Rinse wells gently with water. The amount of residual stain is controlled by the amount of washing. The plate can be tilted under the tap so that water gently runs into each well, gets swirled and then discarded. Repeat as necessary until colonies are clearly visible with limited background staining.
10. Plates can be stored indefinitely at room temperature for future colony enumeration.
11. Enumerate colonies using a standard light microscope.
A grid photocopied onto a transparency can improve enumeration accuracy.

Figure 5: CFU-Hill Colony Stained with Giemsa



Magnification = 50X

For Research Use Only. Not For Therapeutic or Diagnostic Use.

In North America

Toll-Free T. 1.800.667.0322
Toll-Free F. 1.800.567.2899
T. 1.604.877.0713
F. 1.604.877.0704
E. info@stemcell.com
E. orders@stemcell.com

In Europe

Toll-Free T. 00.800.7836.2355
Toll-Free F. 00.800.7836.2300
T. +33 (0)4.76.04.75.30
F. +33 (0)4.76.18.99.63
E. info.eu@stemcell.com

In Australia

Toll-Free T. 1.800.060.350
F. +61 (03)9338.4320
E. info.aus@stemcell.com

In Singapore

T. 65.6776.7754
F. 65.6776.7114
E. info.sg@stemcell.com

STEMCELL Technologies

Version 3.0.0
March 2010
Catalog #28712

4. Peripheral Blood-Derived CFU-Hill Colony Frequencies in the General Population

There is no significant age or gender-related variation in average CFU-Hill frequency in human peripheral blood, however variability in the number of CFU-Hill per 10^6 cells was observed between individual donors.

Table 1: Peripheral Blood CFU-Hill

Gender	Male (mean \pm SD)	Female (mean \pm SD)
Number of donors	15	13
Age range	23 - 54	24 - 54
CFU-Hill number/ 10^6 cells (range)	21 \pm 18 (1 - 67)	20 \pm 17 (2 - 58)
CFU-Hill number/mL of blood	35 \pm 35	26 \pm 23

5. References

1. Rafii S, Lyden D: Therapeutic stem and progenitor cell transplantation for organ vascularization and regeneration. *Nat Med* 9: 702-712, 2003
2. Masuda H, Asahara T: Post-natal endothelial progenitor cells for neovascularization in tissue regeneration. *Cardiovasc Res* 58: 390-398, 2003
3. Asahara T, Murohara T, Sullivan A, Silver M, Van der Zee R, Li T, Witzenbichler B, Schatteman G, Isner JM: Isolation of Putative Progenitor Endothelial Cells for Angiogenesis. *Science* 275: 964-966, 1997
4. Hill JM, Zalos G, Halcox JP, Schenke WH, Wacliwiw MA, Quyyumi AA, Finkel T: Circulating endothelial progenitor cells, vascular function and cardiovascular risk. *N Engl J Med* 348: 593-600, 2003
5. Vasa M, Fichtlscherer S, Aicher A, Adler K, Urbich C, Martin H, Zeiher AM, Dimmeler S: Number and migratory activity of circulating endothelial progenitors cells inversely correlate with risk factors for coronary heart disease. *Circ Res* 89: e1-e7, 2001
6. Mancuso P, Burlini A, Pruneri G, Goldhirsch A, Martinelli G, Bertolini F: Resting and activated endothelial cells are increased in the peripheral blood of cancer patients. *Blood* 97: 3658-3661, 2001
7. Werner N, Kosiol S, Schiegl T, Ahlers P, Walenta K, Link A, Bohm M, Nickenig G: Circulating endothelial progenitor cells and cardio-vascular outcomes. *N Engl J Med* 353: 999-1007, 2005

For Research Use Only. Not For Therapeutic or Diagnostic Use.

In North America

Toll-Free T. 1.800.667.0322
Toll-Free F. 1.800.567.2899
T. 1.604.877.0713
F. 1.604.877.0704
E. info@stemcell.com
E. orders@stemcell.com

In Europe

Toll-Free T. 00.800.7836.2355
Toll-Free F. 00.800.7836.2300
T. +33 (0)4.76.04.75.30
F. +33 (0)4.76.18.99.63
E. info.eu@stemcell.com

In Australia

Toll-Free T. 1.800.060.350
F. +61 (03)9338.4320
E. info.aus@stemcell.com

In Singapore

T. 65.6776.7754
F. 65.6776.7114
E. info.sg@stemcell.com

STEMCELL Technologies

Version 3.0.0
March 2010
Catalog #28712

8. Rehman J, Li J, Orschell CM, March KL: Peripheral Blood "Endothelial Progenitor Cells" Are Derived From Monocyte/Macrophages and Secrete Angiogenic Growth Factors. *Circulation* 107:1164, 2003
9. Ingram DA, Mead LE, Tanaka H, Meade V, Fenoglio A, Mortell K, Pollok K, Ferkowicz MJ, Gilley D, Yoder MC: Identification of a novel hierarchy of endothelial progenitor cells using human peripheral and umbilical cord blood. *Blood* 104: 2752-2760, 2004
10. Kalka C, Masuda H, Takahashi T, Kalka-Moll W, Silver M, Kearney M, Li T, Isner JM, Asahara T: Transplantation of ex vivo expanded endothelial progenitor cells for therapeutic neovascularization. *PNAS* 97: 3422-3427, 2000
11. Zentilin L, Tafuro S, Zacchigna S, Arsic N, Pattarini L, Sinigaglia M, Giacca M: Bone marrow mononuclear cells are recruited to the sites of VEGF-induced neovascularization but are not incorporated into the newly formed vessels. *Blood* 107: 3546-3554, 2006
12. Yoder MC, Mead LE, Prater D, Krier TR, Mroueh KN, Li F, Krasich R, Temm CJ, Prchal JT, Ingram DA: Re-defining endothelial progenitor cells via clonal analysis and hematopoietic stem/progenitor cell principals. *Blood* Epub ahead of print, 2006
13. Rohde E, Malischnik C, Thaler D, Maierhofer T, Linkesch W, Lanzer G, Guelly C, Strunk D: Blood monocytes mimic endothelial progenitor cells. *Stem Cells* 24: 357-367, 2006
14. Thum T, Tsikas D, Stein S, Schultheiss M, Eigenthaler M, Anker SD, Poole-Wilson PA, Ertl G, Bauersachs J: Suppression of endothelial progenitor cells in human coronary artery disease by the endogenous nitric oxide synthase inhibitor asymmetric dimethylarginine. *J Am Coll Cardiol* 46: 1693-1701, 2005
15. Powell TM, Paul JD, Hill JM, Thompson M, Benjamin M, Rodrigo M, McCoy JP, Read EJ, Khuu HM, Leitman SF, Finkel T, Cannon RO 3rd: Granulocyte colony-stimulating factor mobilizes functional endothelial progenitor cells in patients with coronary artery disease. *Arterioscler Thromb Vasc Biol* 25: 296-301, 2005
16. Grisar J, Aletaha D, Steiner CW, Kapral T, Steiner S, Seidinger D, Weigel G, Schwarzingler I, Wolozczuk W, Steiner G, Smolen JS: Depletion of endothelial progenitor cells in the peripheral blood of patients with rheumatoid arthritis. *Circulation* 111: 204-211, 2005
17. Shaffer RG, Greene S, Arshi A, Supple G, Bantly A, Moore JS, Mohler ER 3rd: Flow cytometric measurement of circulating endothelial cells: the effect of age and peripheral arterial disease on baseline levels of mature and progenitor populations. *Cytometry B Clin Cytom* 70: 56-62, 2006
18. Segal MS, Shah R, Afzal A, Perrault CM, Chang K, Schuler A, Beem E, Shaw LC, Li Calzi S, Harrison JK, Tran-Son-Tay R, Grant MB: Nitric oxide cytoskeletal-induced alterations reverse the endothelial progenitor cell migratory defect associated with diabetes. *Diabetes* 55: 102-109, 2006
19. Palange P, Testa U, Huertas A, Calabro L, Antonucci R, Petrucci E, Pelosi E, Pasquini L, Satta A, Morici G, Vignola MA, Bonsignore MR: Circulating haemopoietic and endothelial progenitor cells are decreased in COPD. *Eur Respir J* 27: 529-541, 2006

For Research Use Only. Not For Therapeutic or Diagnostic Use.

In North America	In Europe	In Australia	In Singapore	STEMCELL Technologies
Toll-Free T. 1.800.667.0322	Toll-Free T. 00.800.7836.2355	Toll-Free T. 1.800.060.350	T. 65.6776.7754	Version 3.0.0
Toll-Free F. 1.800.567.2899	Toll-Free F. 00.800.7836.2300	F. +61 (03)9338.4320	F. 65.6776.7114	March 2010
T. 1.604.877.0713	T. +33 (0)4.76.04.75.30	E. info.aus@stemcell.com	E. info.sg@stemcell.com	Catalog #28712
F. 1.604.877.0704	F. +33 (0)4.76.18.99.63			
E. info@stemcell.com	E. info.eu@stemcell.com			
E. orders@stemcell.com				



THE CELL EXPERTS™ | WWW.STEMCELL.COM

TOLL-FREE PHONE 1 800 667 0322 • PHONE 1 604 877 0713

TOLL-FREE FAX 1 800 567 2899 • FAX 1 604 877 0704

ORDERS@STEMCELL.COM • INFO@STEMCELL.COM

FOR FULL CONTACT DETAILS WORLDWIDE VISIT OUR WEBSITE

FOR RESEARCH USE ONLY. NOT FOR THERAPEUTIC OR DIAGNOSTIC USE. MANUAL CATALOG #28712 VERSION 3.0.0